

# ***E600 Series***

**THE WORLD'S FIRST  
60-FOOT ELECTRIC LIFT**



**JLG**



# ***E600 Series: The Inside Story***

Whether in aviation, automotive, warehousing, food & beverage, petrochemical or institutional applications, JLG's E600 Series electric boom lifts help you meet a wide variety of industrial applications. You get 60 feet (18.29 m) of high-reach productivity with the added bonus of zero emissions, reduced noise levels and standard non-marking tires for optimum indoor productivity. Plus, with the QuikCharge GenSet option and optional JibPLUS® boom models, you'll have all the power and positioning versatility you need.

- **Zero Emissions\***
- **Low Noise Operation\***
- **15,200 lb. (6,895 kg) gross vehicle weight with over 43 ft (13.11 m) of reach**
- **Low-mount platform for access in confined areas**

\*E600J and E600JP only



## **Customer-Preferred Controls**

All E600 Series aerial work platforms share JLG's popular control configuration, allowing for ease of operation.



## **Indoor Maneuverability**

Enjoy improved access up, over and around obstacles.

**Standard Non-Marking Tires**

# The Outdoor Advantage

With JLG's exclusive Automatic Traction Control (ATC), optional all-wheel drive, 12 in. (30 cm) ground clearance, and non-marking all-terrain tires, the E600 Series provides superior traction off-slab, where other electric boom lifts can't go. Plus, with the optional on-board generator for quick recharging and a standard oscillating axle for travel over varying terrain, the E600 Series will take you higher and farther than any electric boom lift could before!

- **Rugged design with oscillating axle**
- **Automatic Traction Control (ATC)**
- **12 in. (30 cm) ground clearance**
- **Optional on-board generator for quick recharging**

## Exclusive JibPLUS® Boom Option

JLG's JibPLUS® boom takes you in a new direction—side-to-side. It provides a 180° range of side-to-side movement for the most versatile positioning capability available today.



## Standard Oscillating Axle

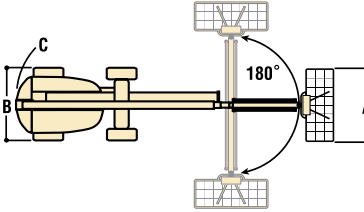
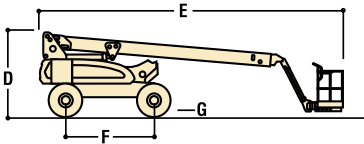
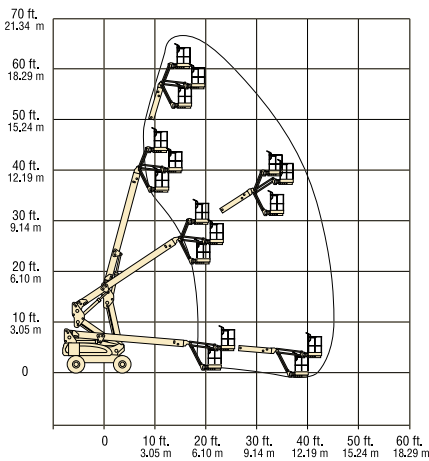
The E600 features a standard oscillating axle for operator comfort and smoother operation over varying terrain.



## Rough Terrain Capabilities

The versatile E600 Series provides superior traction off-slab, where other electric boom lifts can't go.





## MODEL E600J/M600J

### REACH SPECIFICATIONS

Platform Height	60 ft 3 in. (18.36 m)
Horizontal Outreach	43 ft 3 in. (13.18 m)
Swing	400 Degrees Non-Continuous
Platform Capacity	500 lb (227 kg)
Platform Rotator	180 Degrees Hydraulic
Jib (range of articulation)	144 Degrees (+74, -70) Vertical
JibPLUS®	N/A

### DIMENSIONAL DATA

A. Platform Size	30 x 72 in. (0.76 x 1.83 m)
B. Overall Width	7 ft 11 in. (2.41 m)
C. Tailswing	4 ft (1.22 m)
D. Stowed Height	8 ft 4 in. (2.54 m)
E. Stowed Length	30 ft 9 in. (9.37 m)
F. Wheelbase	9 ft (2.74 m)
G. Ground Clearance (Axle)	12 in. (30 cm)
(Chassis)	23 in. (58 cm)
Gross Vehicle Weight*	14,900 lb (6,759 kg)
Max. Ground Bearing Pressure**	.52 psi (3.7 kg/cm <sup>2</sup> )

### CHASSIS

Drive Speed	3.0 mph (4.8 kmph)
Gradeability 2WD/4WD	30%/45%
Turning Radius, (Inside)	4 ft (1.22 m)
Turning Radius, (Outside)	15 ft 4 in. (4.67 m)
Axle Oscillation	8 in. (20 cm)
Tire Size/Type	36 x 14-22.5 Non-Marking Pneumatic

### POWER SOURCE

Electrical System	48V DC
Batteries	8 x 6V, 415 amp-hr
Drive Motors	Dual Electric Traction
Brakes	Spring Applied Multiple Discs
Hydraulic Motor/Pump	Series Wound Motor/Gear Pump
Hydraulic Reservoir	15 gal. (56.78 L)
Generator Set (M Models)	Fully Automatic, 45 amp
Engine Fuel Tank (M Models)	Kubota 6.7 hp Diesel Engine
Generator Noise Level (at max. rpm)	70 dBA @ 7 meters

\*Certain options or country standards will increase weight.  
\*\*Ground bearing pressure applies to standard tires.

## MODEL E600JP/M600JP

### REACH SPECIFICATIONS

Platform Height	60 ft 4 in. (18.39 m)
Horizontal Outreach	44 ft 5 in. (13.54 m)
Swing	400 Degrees Non-Continuous
Platform Capacity	500 lb (227 kg)
Platform Rotator	180 Degrees Hydraulic
Jib (range of articulation)	145 Degrees (+89, -56) Vertical
JibPLUS®	180 Degrees Horizontal

### DIMENSIONAL DATA

A. Platform Size	30 x 72 in. (0.76 x 1.83 m)
B. Overall Width	7 ft 11 in. (2.41 m)
C. Tailswing	4 ft (1.22 m)
D. Stowed Height	8 ft 4 in. (2.54 m)
E. Stowed Length	33 ft 4 in. (10.16 m)
F. Wheelbase	9 ft (2.74 m)
G. Ground Clearance (Axle)	12 in. (30 cm)
(Chassis)	23 in. (58 cm)
Gross Vehicle Weight*	15,200 lb (6,895 kg)
Max. Ground Bearing Pressure**	.51 psi (3.6 kg/cm <sup>2</sup> )

### CHASSIS

Drive Speed	3.0 mph (4.8 kmph)
Gradeability 2WD/4WD	30%/45%
Turning Radius, (Inside)	4 ft (1.22 m)
Turning Radius, (Outside)	15 ft 4 in. (4.67 m)
Axle Oscillation	8 in. (20 cm)
Tire Size/Type	36 x 14-22.5 Non-Marking Pneumatic

### POWER SOURCE

Electrical System	48V DC
Batteries	8 x 6V, 415 amp-hr
Drive Motors	Dual Electric Traction
Brakes	Spring Applied Multiple Discs
Hydraulic Motor/Pump	Series Wound Motor/Gear Pump
Hydraulic Reservoir	15 gal. (56.78 L)
Generator Set (M Models)	Fully Automatic, 45 amp
Engine Fuel Tank (M Models)	Kubota 6.7 hp Diesel Engine
Generator Noise Level (at max. rpm)	70 dBA @ 7 meters

\*Certain options or country standards will increase weight.  
\*\*Ground bearing pressure applies to standard tires.

## PERFORMANCE FEATURES

### Standard Features:

- 6 ft (1.83 m) Articulating Jib
- 6 ft (1.83 m) Vertical and Lateral Articulating Jib (E600JP and M600JP Only)
- Operators Tool Tray
- 30 x 72 in. (0.76 x 1.83 m) Side Entry Platform
- Inward Self-Closing Swing Gate
- 180 Degree Hydraulic Platform Rotator
- Platform Console Machine Status Light Panel\*
- 110V-AC GFI Receptacle in the Platform
- 5 Degree Tilt Alarm/Indicator Light
- Hourmeter
- Battery Condition Indicator
- Lifting/Tie Down Lugs
- 14 x 22.5 Non-Marking Pneumatic Tires
- 400 Degree Non-Continuous Rotation
- Removable Battery Box
- Oscillating Axle
- Manual Descent
- Automatic Traction Control (ATC)
- SCR Automatic Battery Charger
- All Motion Alarm

\*Provides indicator lights at platform control console for system distress, low fuel, 5 degree tilt light, and foot switch status.

### Individual Options:

- 30 x 48 in. (0.76 x 1.22 m) Platform
- Mesh to Top Rail Bolt-on Aluminum Soft Touch System (E/M600J only)
- Platform Padding (30 x 72 in. Platform)
- 1/2 in. Airline to Platform
- Foam-Filled Tires
- 1200W Inverter
- Hostile Environment Kit<sup>1</sup>
- UL® EE Rating<sup>2</sup>
- Tow Package<sup>3</sup>
- Light Package<sup>4</sup>
- Platform Worklights
- Flashing Amber Beacon

- Includes console cover, boom wipers and cylinder bellows.
- Not available on Multi-Powered models.
- 2WD only.
- Includes head and taillights, and platform worklights.

Note: Some options may increase lead time, and some option combinations may not be available.

### The JLG "1 & 5" Warranty

JLG Industries, Inc. backs our products with our exclusive "1 & 5" Warranty. We provide coverage on all products for one (1) full year, and cover all specified major structural components for five (5) full years. Due to continuous product improvements, we reserve the right to make specification and/or equipment changes without prior notification. This machine meets or exceeds applicable OSHA Regulations in 29 CFR 1910.67, 29 CFR 1926.453 and ANSI A92.5-1992 as originally manufactured for intended applications.

### JLG Industries, Inc.

1 JLG Drive, McConnellsburg, PA 17233-9533  
Telephone 717-485-5161 Toll-free in US 877-JLG-LIFT  
Fax 717-485-6417  
www.jlg.com



# ELECTRIC BOOM LIFTS

	<b>E600J</b>	<b>M600J</b>	<b>E600JP</b>	<b>M600JP</b>
Platform Height	18.29 m	18.29 m	18.29 m	18.29 m
Horizontal Outreach	13.06 m	13.06 m	13.23 m	13.23 m
Swing (non-continuous)	400°	400°	400°	400°
Platform Capacity – Unrestricted	230 kg	230 kg	230 kg	230 kg
Platform Rotator (Hydraulic)	180°	180°	180°	180°
Jib – Overall Length	1.24 m	1.24 m	1.24 m	1.24 m
Jib - Range of articulation	141° Vertical (+86°/ -55°)	141° Vertical (+86°/ -55°)	141° Vertical (+86°/ -55°)	141° Vertical (+86°/ -55°)
JibPLUS™ - Range of Articulation	—	—	180° Horizontal	180° Horizontal
A. Platform Size	0.76 m x 1.83 m	0.76 m x 1.83 m	0.76 m x 1.83 m	0.76 m x 1.83 m
B. Overall Width	2.44 m	2.44 m	2.44 m	2.44 m
C. Tailswing (working condition)	1.22 m	1.22 m	1.22 m	1.22 m
D. Stowed Height	2.57 m	2.57 m	2.57 m	2.57 m
E. Stowed Length	9.37 m	9.37 m	9.91 m	9.91 m
F. Wheelbase	2.74 m	2.74 m	2.74 m	2.74 m
G. Ground Clearance	0.30 m	0.30 m	0.30 m	0.30 m
Gross Vehicle Weight †	6,900 kg	7,070 kg	7,000 kg	7,170 kg
Drive Speed	4.8 km/h	4.8 km/h	4.8 km/h	4.8 km/h
Gradeability	30%	30%	30%	30%
Tyres (pneumatic/non-marking)	36/14LL-22.5	36/14LL-22.5	36/14LL-22.5	36/14LL-22.5
Axle Oscillation (optional)	0.20 m	0.20 m	0.20 m	0.20 m
Turning Radius – Inside	1.22 m	1.22 m	1.22 m	1.22 m
Turning Radius – Outside	4.72 m	4.72 m	4.72 m	4.72 m
Electrical System	48V DC	48V DC	48V DC	48V DC
Batteries	8 x 6V 415 A/hr	8 x 6V 415 A/hr	8 x 6V 415 A/hr	8 x 6V 415 A/hr
Drive Motors	Dual Electric Traction	Dual Electric Traction	Dual Electric Traction	Dual Electric Traction
Brakes	Automatic Spring Applied	Automatic Spring Applied	Automatic Spring Applied	Automatic Spring Applied
Hydraulic Pump Motor	Perm. Magnet	Perm. Magnet	Perm. Magnet	Perm. Magnet
Hydraulic Pump	Gear Pump	Gear Pump	Gear Pump	Gear Pump
Hydraulic Reservoir	55 L	55 L	55 L	55 L
Generator Set - Fully Automatic	—	Yanmar Air-cooled 4.5 kW	—	Yanmar Air-cooled 4.5 kW
Generator Fuel Tank	—	50 L	—	50 L

† Certain options or country standards will increase weight.

Specifications may change to meet country standards or with the addition of optional equipment.



# JLG MODELS E600J, M600J, E600JP & M600JP

