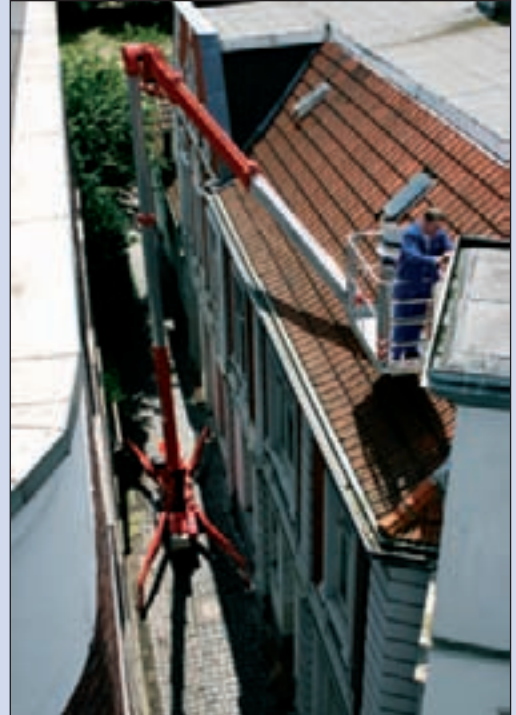


LEO 23 GT[®]

The slim one for height access solutions

The advantages

- Patented height and width adjustable crawler chassis
- Articulated and telescopic construction with compact transport dimensions
- Telescopic lower and upper arm
- Continuous 180° basket rotation
- Complete control possible from basket
- Sensitive electric hydraulic remote control to give precise movement
- Fuzzy control system
- Tension-free erection on nearly all types of ground by means of full-hydraulically operated outriggers
- One-side or both-sides narrow setting
- Low ground pressure in travelling position due to crawlers
- High stability thanks to self-centring asymmetric profiles
- Low-maintenance on profiles due to multi-stage cylinders
- Constant outreach at variable heights



Maximum outreach also in limited spaces and jacking areas



Can be used in the most complicated spaces too



Due to articulated telescopic boom construction many obstacles can be overcome



Stable on nearly all kinds of flooring



Adjustable crawler chassis permits driving on slopes



Compactly built – passes through every standard door



Tel.: +971 4 885 6065 • Fax: +971 4 885 6034

P.O. Box 213645 Dubai Investment Park, Dubai, U.A.E.

Email: andygating@manliftgroup.com

www.manliftgroup.com

LEO 23 GT

Technical Data*

Aerial Work Platform **TEUPEN[®] hyLIFT[®]**



LEO 23 GT

Working height:	approx. 23,00 m
Cage floor height:	approx. 21,00 m
Lateral outreach to either side:	approx. 11,20 m
Safe load on cage:	max. 200 kgs
Size of working cage (LxWxH):	1,40 x 0,70 x 1,10 m
Rotating working cage:	180°
Overall length in travelling position:	min. 6,20 m
Minimum clearance width:	min. 0,98 m
Overall height in travelling position:	min. 1,98 m
Net weight:	approx. 3010 kgs
Standard jacked area (centre of plate, LxW):	min. 4,10 m x 4,30 m
Min. jacked area (centre of plate):	min. 2,30 m
Max. load on jack plate per plate:	approx. 22,4 kN
Surface load in standard work position:	approx. 1,8 kN/m ²
Range of rotation Standard jacked area:	360°
Limited range of rotation (both sides narrow):	2 x 15°
Limited range of rotation (one side narrow):	192°
Max. ground slope:	approx. 26 %
Climbing ability (in direction of traffic):	approx. 30 %
(crosswise to direction of traffic):	approx. 26 %
Driving speed:	approx. 1,3 km/h
Power track:	installed inside

Driving engine Kubota Z-602

Water-cooled-2-Cyl.-4-stroke-diesel-engine	
Piston displacement:	599 cm ³
Max. output at 3600 min ⁻¹ :	12,5 kW (17 HP)
Type of fuel:	Diesel
Noise level max.:	approx. 89 dB (A)

Ancillary equipment

Electricmotor EBS 90 L X 4

Nominal input voltage::	230 V / 50 Hz
Drawing of current:	12,9 A
Output:	2,2 kW
Additional weight:	approx. 25 kg

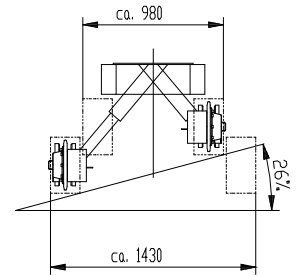
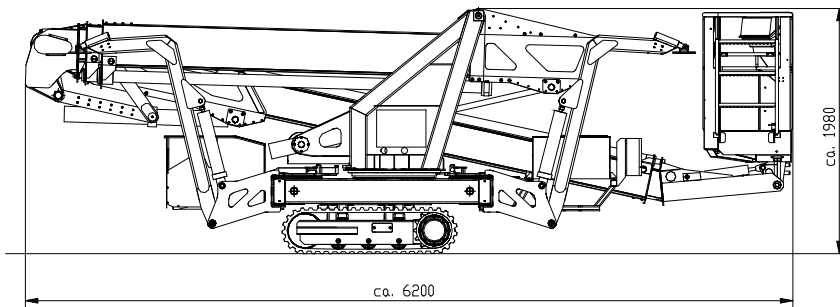
Alternative battery drive

Nominal input voltage of battery charger:	230 V / 50 Hz
Hydraulic unit:	48 V / 6 kW
Additional weight:	approx. 180 kg

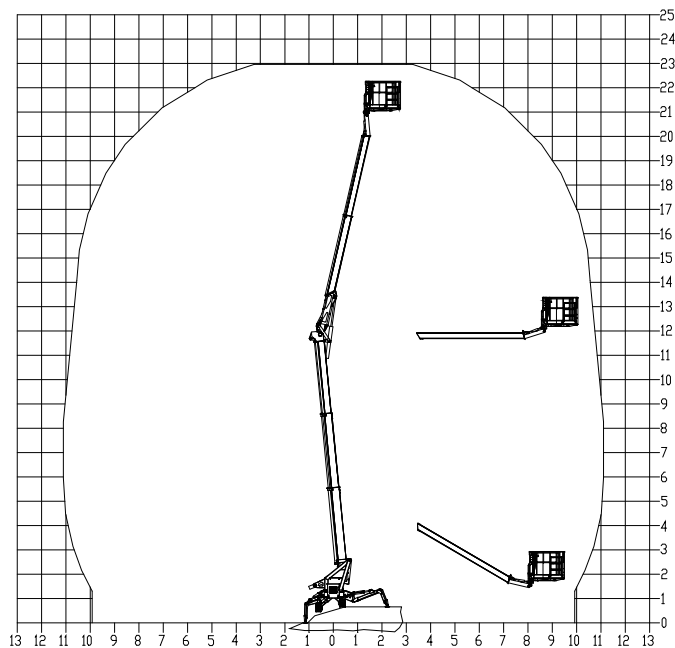
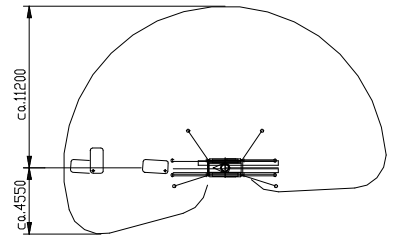
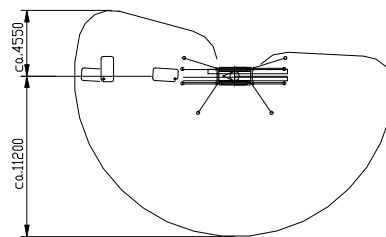
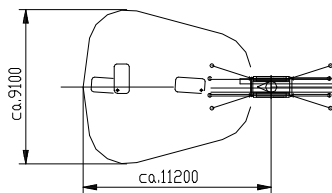
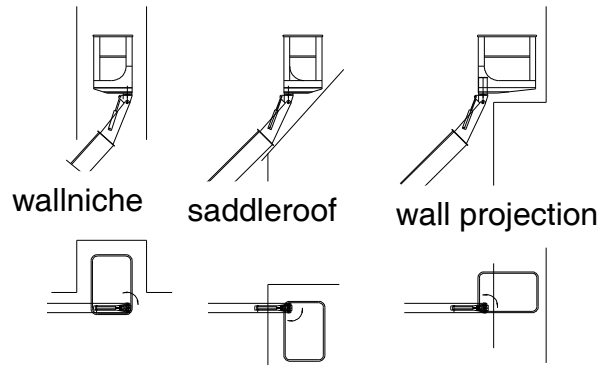
*Technical data with standard equipment!

Alterations in construction reserved!

As at 25.10.07



Examples access technology
Rotation of basket 180° - offset basket



Alteration in construction reserved!