

LEO 30 T

Technical Data of*

Aerial Work Platform **TEUPEN[®]hyLIFT[®]**



LEO 30 T

Working height:	approx. 30,00 m
Cage floor height:	approx. 28,00 m
Lateral outreach to either side at 200 kgs:	approx. 14,00 m
at 80 kgs:	approx. 15,70 m
Safe load on cage:	200 kgs
Working cage rot. hydr. around:	180°
Swivelling range of art. top boom:	180°
Size of working cage (LxWxH):	approx. 1,2 x 0,8 x 1,1m
Overall length in travelling position:	approx. 7,20 m
Overall width in travelling position min.:	approx. 1,58 m
Overall height in travelling position min.:	approx. 1,98 m
Range of rotation:	approx. 450°
Total weight:	approx. 4200 kgs
Max. load on jack plate per plate.:	approx. 26 kN
Size of stabilizing jack plate:	approx. 0,31 m x 0,22 m
Surface load in standard work position:	approx. 2,0 kN/m ²
Ground pressure in travelling position:	approx. 5,7 N/cm ²
Standard jacked area (LxW) min.:	approx. 4,89 x 4,34 m
Loading possibility (WxH) max.:	approx. 2,40 x 1,10 m
To be jacked up to ground slope:	approx. 30 %
Chassis to be adj. in height hydr. by:	approx. 0,22 m
Ground clearance:	approx. 0,31 m
Climbability:	approx. 30 %
Travelling speed up to:	approx. 0 to 3 km/h
Range of wireless control:	approx. 100 m
Restricted jacked area (LxW) max.:	approx. 6,22 x 2,58 m
Restricted range of rotation (both sides narrow):	approx. 2 x 20°
(one side narrow):	approx. 220°
Control voltage:	24 V
Electric-drive:	230 V / 400 V

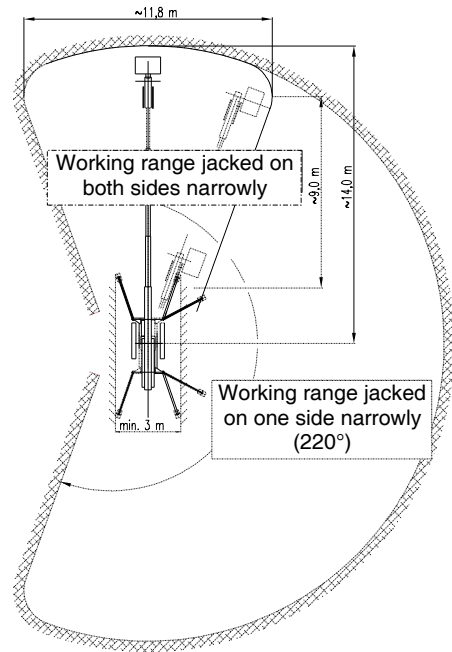
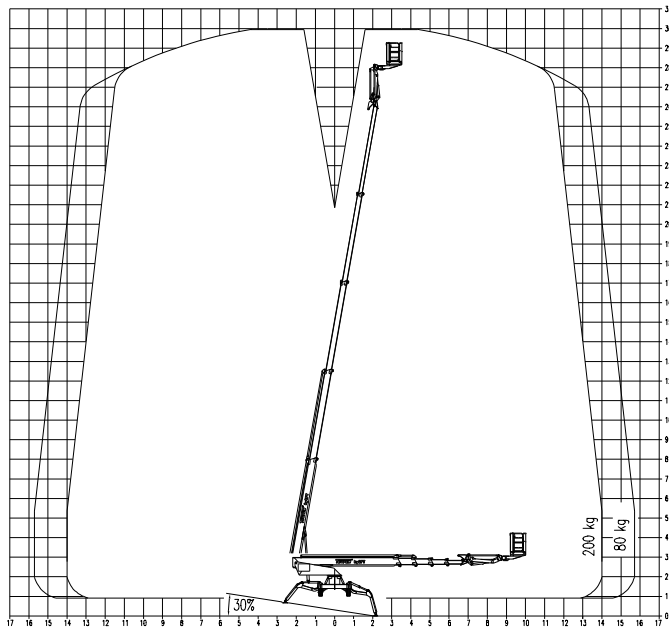
Driving engine Kubota D 1005-E

Vertical, water-cooled, 3-cylinder 4-cycle diesel engine	
Cubic capacity:	1001 cm ³
Maximum output:	15.1 kW (20 HP)
Fuel type:	Diesel
Noise emission:	Approx. 77 dB (A) (at a distance of 7 m)

*Technical data with standard equipment!

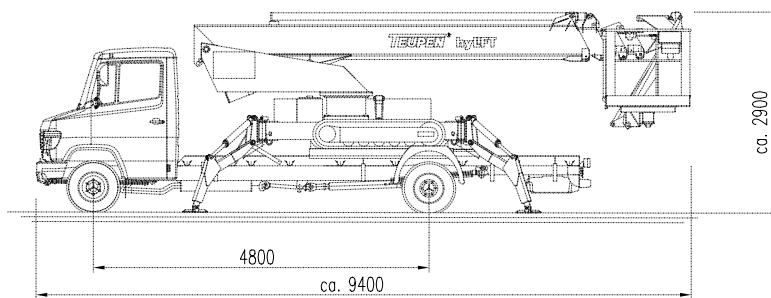
Alteration in construction reserved!

As at 17.09.07



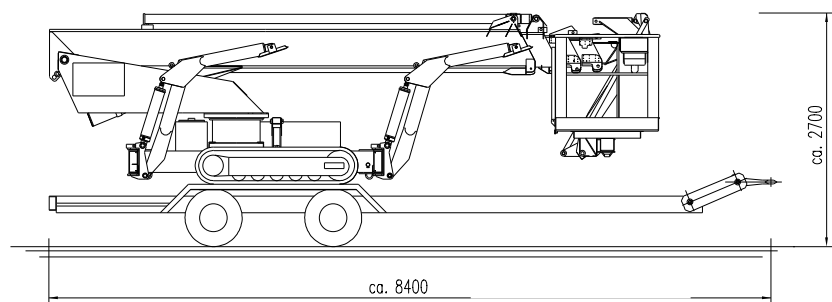
Three in One

As truck version

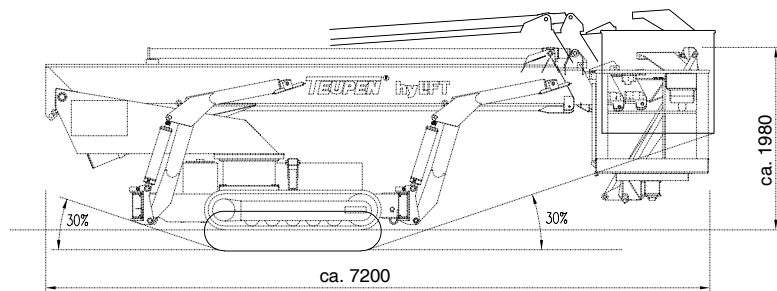


Max. load platform height: 1050 mm (unload)
 Max. load platform width: 2400 mm
 Min. load platform length: 5500 mm
 Minimum payload: 4200 kg
 Wheelbase min.: 4800 mm

As trailer version (compressed air braked)



As self-propelled unit



Alteration in construction reserved!

MANLIFT

P.O. Box 213645, Dubai Investment Park, Dubai, U.A.E.

Tel.: +971 4 885 6065 • Fax: +971 4 885 6034 • Email: info@manliftgroup.com • www.manliftgroup.com