



#1

## ATTACH YOUR LANYARD

Always attach your Harness lanyard to the approved attachment point when entering the MEWP basket.

Adjust your lanyard to be as short as possible in the basket to apply “restraint” fall protection.



800 MANLIFT



## #2

### MEWP Preventive Maintenance & 1<sup>st</sup> Check!

A critical part of effective maintenance/reliability and safety is the “**Post-hire Inspection**” Manlift refers to this as our **1<sup>st</sup> Check**. It is the initial health check given to a MEWP post rental. Only competent trained persons shall perform this rental cycle process.





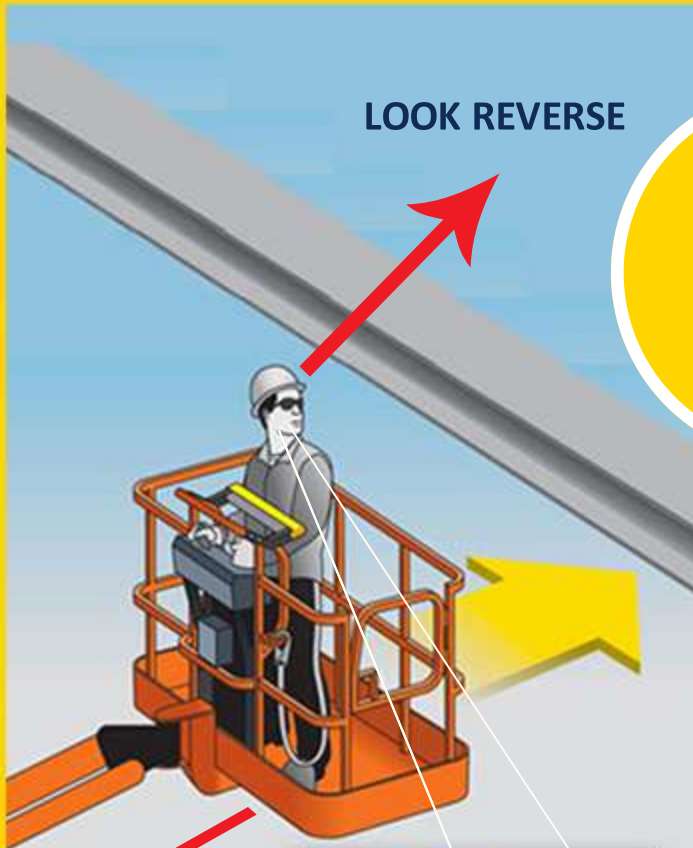
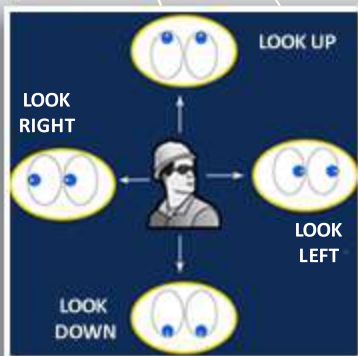
LOOK REVERSE

#3

## AVOID ENTRAPMENT!

As a MEWP operator or occupant you must ALWAYS observe in the direction you are moving! To avoid “**entrapment**” and collision, continual vigilance is key! “*The International Powered Access Federation*” IPAF instructors are aware of this required behaviour characteristic for MEWP occupants and it is emphasised continuously during IPAF MEWP operator training.

LOOK FORWARD







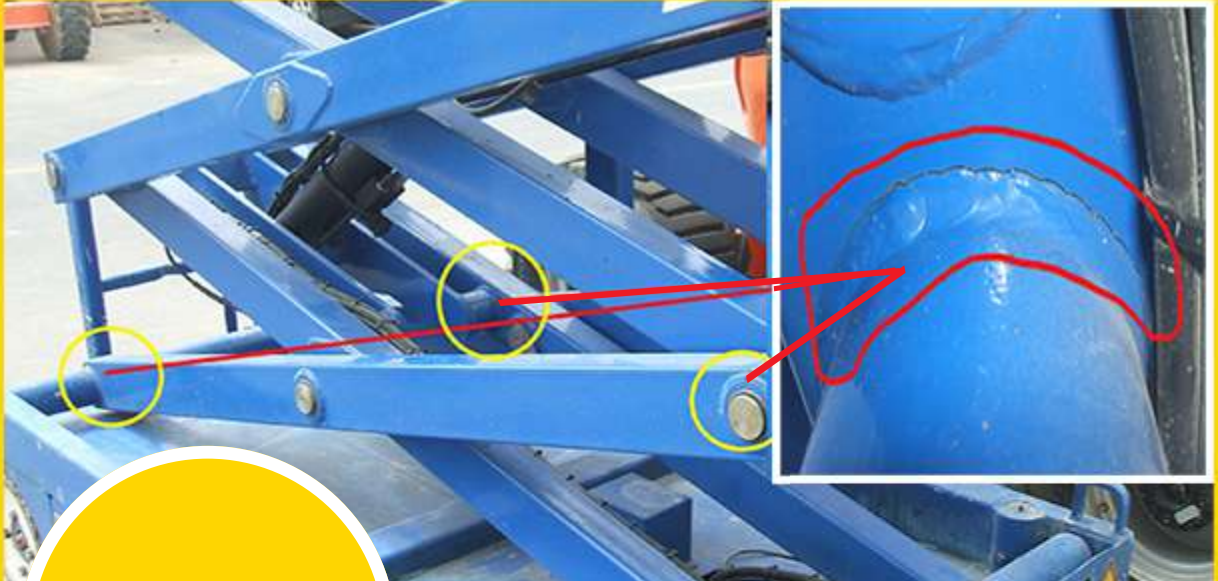
## #4

### MANHOLE COVER HAZARD

Before you begin to use your MEWP, carry out your “pre-use” “walk the route” site inspection. Manhole covers conceal “underground services” voids and the load imposed on the manhole cover by the MEWP wheel can often result in a collapse; resulting in a “tip-over” of the MEWP.

If you are in an area where manhole covers are evident, be aware that underground piping may run between the manhole covers, and the area should be clearly marked via safety cones etc. so the MEWP operator can clearly see the hazard from height. **NOTE:** “underground service” covers can also be present indoors!





## #5

### INSPECTION FOR CRACKED WELDS ON MEWPS

MEWPs can suffer from “cracked welds”, this phenomenon can present on any type of MEWP from any manufacturer and for multiple reasons. Owners and users of MEWPs have front line responsibilities for detecting cracked welds that can develop in a MEWP.

Detection Inspections for this type of defect is a standard process that must be performed. It is mandated by manufacturers and regulatory authorities at specific intervals e.g.:

- Prior to delivery inspections
- Post rental inspections
- During periodic and preventative maintenance inspections
- At milestones in working hours or age of the MEWP
- After incident
- During use (pre-operation inspections)

Where to inspect for cracked welds and how is information provided by Manufacturers Training and literature, Training bodies such as IPAF in their training modules, and specifically qualified personnel for this task.